

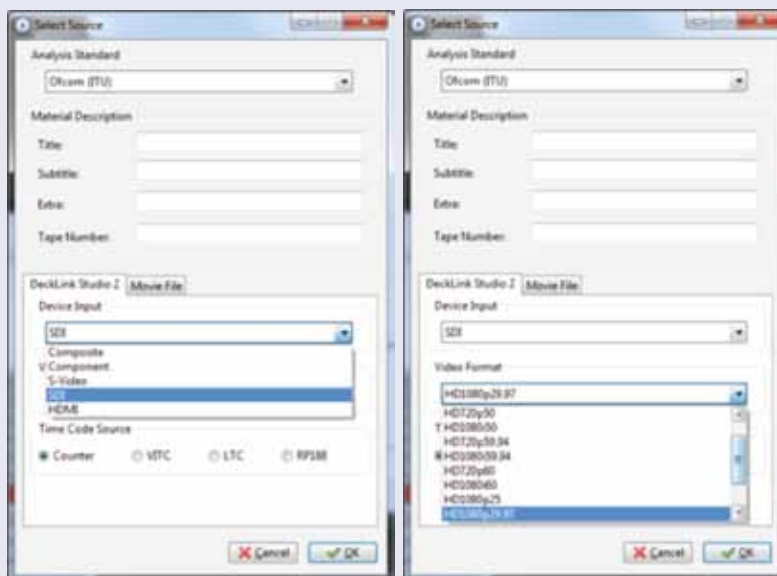


Hardware Requirements:

- For SD-only analysis the HardingFPA-HD system will require as a minimum a PC host fitted with an Intel Core 2 Duo processor.
- Real-time analysis of HD signal feeds will require a PC host fitted with a high performance Intel Quad Core processor and fast DDR3 memory.
- The host PC must have at least one PCIe 4 lane full height card slot that can be allocated for a non-graphics application.
- Compatible with Windows XP, Windows 7 and Windows Server 2008 R2.
- Cross platform support for both Mac (OS X 10.6+), Windows 7 and Windows Server 2008 or later versions

Other Features:

- FREE Viewer for displaying results.
- Supports auto-saving of results files with configurable options to reduce disk storage demands.
- Detects potential subliminal events.
- Integrates with HardingFPA-X file-based analyser to allow the HardingFPA-X's editor support tools to access the HardingFPA-HD's results.



For more information on Cambridge Research Systems Limited and its products:

Please call (+44/0) 1-634 720707

Or email: sales@hardingfpa.com

Or visit our website: www.hardingfpa.TV

Or write to us at: 80 Riverside, Sir Thomas Longley Road, Rochester, Kent, ME2 4BH, UK.

Please Note: Cambridge Research Systems Ltd. operates a policy of continual product improvement. As a result, this information is liable to change without notice.

Cambridge Research Systems Ltd. ©2012